

BRUCE NELSON
COMBAT LEATHER

BRUCE NELSON COMBAT LEATHER

**P. O. Box 8691 CRB
Tucson, Arizona 85738
Ph: (602) 825-9047**

Introduction

Thank you very much for inquiring about my line of holsters and related equipment.

As a holster designer and leather craftsman for over 20 years, I am always surprised at how little useful specific information holster catalogs contain. I suspect that many companies simply do not want to be bothered explaining what they sell, while others don't really have a firm philosophical and technical basis for the products they offer, preferring instead to imitate common designs of the past. It is my intention to provide you with something quite different. Instead of a sales pitch with standard phrases such as "best materials and workmanship," I want to give you insight into how a specific design is formulated and how it relates to the problem it solves. If I have done this well in the text that follows, you will be able to look for specific, observable qualities in any leather gear you are considering for purchase.

It is important to me that you find what is of most service to you and your special requirements. Quality can only be judged once you receive your order, since no photograph or description will adequately convey what the leather can say for itself. Therefore I would rather use this catalog to explain holster and carry system design and function than to give you the same advertising superlatives you can read anywhere.

Dedication

For My Wife Sandy

Who inspires my best work
and makes it worth doing.

About Bruce Nelson

by Rick Miller

Contributing Writer, *Combat Handguns*,
American Handgunner, *Guns & Ammo*

The most important thing you should know about Bruce Nelson is that his holster designing and building is the product of many years in law enforcement and competitive practical shooting.

During his law enforcement career, Bruce was a Uniform Patrol Officer, Detective and Undercover Agent. He investigated felony crimes of all kinds and spent many years in narcotics investigation with the California Department of Justice, Bureau of Narcotic Enforcement. During this time he supervised a team of Narcotic Agents and served as Bureau Commander of the Napa County, California, Special Investigation Bureau.

During Bruce's law enforcement career he spent much of his time conducting firearms training for the Department of Justice Special Agents both in the Academy and in Officer Survival Training. He organized and taught firearms instructor schools for area office firearms instructors and formulated an Officer Survival Program that he presented to police and sheriffs departments throughout California as part of the Department of Justice Advanced Training Center Program. Bruce has also served as guest speaker and consultant for many other firearms and police survival seminars and programs throughout California and the Western United States.

Bruce is one of the pioneers in the world of practical pistol competition, having been a Southwest Pistol League Class A shooter and a record holder starting in the mid 1960's. He was also a part of the now legendary Bear Valley Gunslinger matches conducted by Jeff Cooper in Big Bear Lake, California. These matches served as the "research laboratory" for development of the Modern Technique of the Pistol.

Bruce was one of the forty founding members of the International Practical Shooting Confederation, which was formed in Columbia, Missouri in 1976. He took second place in the I.P.S.C. Columbia Conference Match, which served as the World Match for that year. He was also the I.P.S.C. Southwest United States Champion in 1977.

When Jeff Cooper launched the American Pistol Institute in 1976, Bruce was there as API's first staff instructor. He continues to serve as a staff instructor in API's programs today.

All of Bruce's law enforcement and practical shooting background combines with 20 years as an exacting holster designer and leather craftsman. Although until recently, Bruce's law enforcement career prevented him from building many holsters, his influence on design has been considerable. Such designs as his #1 Professional and the #10 Summer Special have inspired a generation of imitations.

I know of no one else in the holster business who has such a varied and extensive background in the practical use of holsters and weapons carry systems. Bruce's philosophy is to produce and offer to his clients only what improves upon those designs already on the market. He works hard to assure meticulous quality in this very personal craft. Jeff Cooper frequently tells his classes that Bruce Nelson is the world's premier holster designer. I couldn't say it better.

Some General Thoughts on Holster Selection

Why does a good holster make a difference? The first thing that should be said is that sometimes it doesn't. Does this sound strange coming from a holster maker? Well, consider this: You first need to ask yourself what you want your holster to do. If you just want a container for your pistol that provides some protection and allows you to carry it on your belt for short term, non-critical use, you can find many factory produced economy models in gun and sporting goods stores that will fill your needs. Much of the precision in design and construction spoken of in this catalog is only noticed when you utilize a holster in the upper levels of performance.

A holster is a component of a system to be employed in critical use situations. These situations include defensive and competitive use as well as hunting and wilderness survival. In all situations, it is necessary to understand the mission of the pistol. In defensive use, for example, as the term implies, the pistol stops an often unexpected fight that someone else has started. The degree to which the pistol is "at the ready" will determine if hauling it around was worth the trouble. Having a pistol that is ready without restricting normal daily activity is precisely the mission of the well-designed holster. Since the necessary qualities of different types of holsters vary with their intended purposes, specific information is more easily covered under model descriptions in this catalog. Certain principles of design follow as they are common to proper function of most holsters.

Proper Firing Grip

It is axiomatic that inconsistent grip creates inconsistent results downrange. It reasonably follows that any holster which, by its improper design, does not allow a full and final firing grip upon first contact with the weapon, is to be avoided. Unfortunately many holster designs do not incorporate this basic concept.

Holster Fit and Weapon Retention

A good holster should retain the pistol during reasonable physical activity. Of course, if a holster would retain the pistol during any activity, it would be so secure as to prevent drawing also. If draw speed were not an important component of the pistol/holster system, the solution would be relatively simple--multiple positive closure devices. When the "utilization at upper performance levels" comes into play, functional clarity and design precision are critical. Experience in practical shooting has shown that absent some special purpose, the unfastening of a retaining device is best avoided. As well as being generally time consuming, retaining straps in many cases interfere with proper firing grip to some degree even when well designed. The fit of the holster therefore is important. In all cases holsters should be precisely fitted to the pistol they are intended to carry and should be used for only that pistol, or a pistol with identical dimensions. The practice of selling holsters marked "Medium Auto" or "Large Revolver" is common but unacceptable if serious use of the holster is intended. A holster which fits many pistols is not likely to fit yours very well. In fact, a new holster should fit like a new pair of shoes. When broken in, it should then be just right. Heavily oiled holsters should also be avoided since the good fit they initially may have will last only a short time, after which they will become soft and pliable. Other traditional retention devices such as thump-snap straps and adjustable tension devices are called for or even required under certain conditions and will be more fully discussed in the model description section.

Holster Balance/Pistol Weight Distribution

Often when a holster style or design is created, the manufacturer proceeds to create conceptually identical patterns for all pistols for which it is made. This practice, while useful for marketing or production simplicity, does not account for important differences in pistols. The exact wearing relationship between pistol, holster, and person is influenced, sometimes significantly, by pistol weight distribution. Consider the simple case of the comparison between semi-auto pistols and revolvers. While a revolver centers its weight in the cylinder area and sometimes forward depending on barrel weight, a semi-auto's center of balance is often in the grip area with very little weight forward. The effect of this can be seen, for instance, in the notion of making a so-called "high-ride" holster. Particularly in the case of the semi-auto pistol placing the trigger guard any higher than belt level places up to 80% of the weight of the pistol from one to three inches above the belt. The only way to conceal a top heavy holstered pistol of this type is to uncomfortably tighten the belt and even this may not work. In general each design must be made with the individual pistol, not the style or visual look of the holster, as the central factor.

Holster/Belt Fit

Consistent presentation of the pistol from the holster demands that holster and belt fit snugly to avoid any wobble or shifting of holster location. Belt loops which are slightly too tight when new should break in to proper fit. It is probably best to purchase both holster and belt from the same maker and to specify belt loop size to match your belt, since there are variations from one maker to the next. The same principle, of course, applies to magazine pouches.

Durability

When you buy good leather gear, you want and expect it to last. How long it will serve you depends on several factors, namely, the quality of design, the work and materials used, the frequency and conditions under which it is used, and the type and degree of care you give it. The truth about leather gear, any leather gear, is that it is not going to last a lifetime unless it is not used or used very little. It is made of natural materials, not stainless steel. However, it can last many years if it is well made and receives care and maintenance. You will receive complete instructions for breaking in, caring for, and maintaining your leather equipment with your order. I highly recommend that you read and follow this information for best results.

It would fill a book if I attempted to describe all of the design and material choices which must be made. It should suffice to say that factory produced holsters must and do make compromises in their designs. Even if the designer of the mass produced holster has any firearms background, he is usually required to design for one factor that has nothing to do with what the holster's function--this factor is ease of production. A holster factory is made up primarily of people who have no interest in shooting. They usually are trained on the job with no previous background in leather work. The holster then can be no better than the least skilled people who build it. This is a prime restriction on the functional sophistication of most holsters produced in a factory environment.

The second restriction on quality is that the very best materials are expensive and in some cases hard to obtain in quantity. When a mass produced holster is discounted up to 50% for the dealer, costs have to be cut somewhere to make a profit. I am constantly contacting tanneries throughout the world to obtain samples for experimentation. Even when you find the dense, tough leather that makes an exceptionally durable holster, the supply may not remain constant in its quality. It is therefore, a never ending effort. The same effort must be made for finishes, hardware etc.

Holsters

#1 Professional - Semi-Auto Pistol

In the mid-1960's practical pistol competition was still new, and the few of us who were involved in those early years learned many things from testing ourselves and our equipment. The tradition in holster design was to cant most strong side belt holsters barrel to the rear as much as 45 degrees. As efforts were made to increase draw efficiency, and thereby speed, it was apparent that a consistent firing grip was made more difficult by this barrel rear angle. Slow motion photography revealed the source of the problem. Central to a consistent firing grip is the burying of the web between thumb and index finger into the upper backstrap of the pistol, especially in the case of the auto-pistol. This became more difficult the greater the angle. The limiting factor in this movement is the maximum degree of rearward wrist angle, which in turn tends to induce a forward "hunch" movement from the waist up.

In 1967, I designed the #1 Professional for Semi-Auto Pistol to correct these problems. This holster is set for straight-drop angle and therefore eliminates the above problem. It allows for the forearm/wrist angle to remain constant throughout the draw, eliminating the need for reestablishment of this angle in the firing stance.

The issue of concealment has been credited with necessitating the barrel rear cant. To a certain degree this has been true due to the limitations imposed by the traditional single fold over belt loop. In designing the double belt loop system, I achieved concealment by the rear belt loop pulling the grip area into the body. At the same time, the rear portion of the slide does not extend out and forward as in rear canted holsters since the slide is not tilted forward.

The design of the belt loops achieved a second objective. It allows cross-draw use with concealment which allows significant comfort while sitting. This comfort and concealment, so rare in many cross-draws, is accomplished while the pistol is worn far enough forward of the hip to allow quick access. Cross-draw from concealment is amazingly efficient for two reasons. It provides much easier access while sitting and vastly simplifies clearing of the coat since you reach inside the coat rather than "sweeping the coat" as in a strong side draw. These advantages, and this holster in concealed carry competition, started a trend in the early 1970's that led to the present day popularity of the cross-draw for practical competition.

The #1 Professional has proven to be a good woman's holster. It works well in conjunction with the #230 Woman's Holster Adapter for strong side carry (see description.) It also works well cross-draw for women who are short-waisted because the degree of lift is reduced in the cross-draw position.

The holster is precision hand molded for exact fit and retention. Size is held to the absolute minimum. This makes the holster equally serviceable for concealment, defensive pistol classes, and practical competition. (See Pistol/Holster Availability List)

#2 Professional - Revolver

This holster is designed for strong side carry. After much experimentation, a moderate 10 degree barrel rear cant was adopted. Unlike the grip shape of the auto pistol and resultant draw dynamics, the revolver's convex curved backstrap and grip shape allows this slight cant to aid in the concealment of the typically larger revolver stocks with no detriment to proper firing grip. The wide belt loop places the cylinder at belt level. A "pull-through" snap retainer allows one-motion draw while assisting the precision hand molding in retention of the gun. Single action revolvers are retained by a hammer thong. (See Pistol/Holster Availability List.)

#3 Professional - Semi-Auto with Thumb-Snap Strap

#4 Professional - Revolver with Thumb-Snap Strap

These holsters are substantially the same as Models #1 and #2 but with the addition of a metal reinforced thumb-snap strap. Individual circumstances should determine whether you choose the thumb-snap version of the Professional. If you are performing unusually strenuous physical activity, and draw speed is less critical, the thumb-snap model may be preferred. Thumb-snap holsters are often made as a substitute for a good fit. The #3 and #4 Professional are fitted the same way as the #1 and #2 so that the thumb-snap is an additional retention system.

Thumb-snap design in the mass produced holster usually takes the form of a piece of spring steel riveted to the outside of the leather. Besides being exposed to rust, the thumb portion of the strap is usually straight and cannot be formed to a shape that matches your hand and method of drawing. The #3 and #4 Professional have completely leather covered metal lined thumb snaps that can be formed to your preference. Unlike mass produced holsters, all straps are fitted after all other fitting is done to insure quick release.

Single action auto pistols are fitted with the hammer cocked unless otherwise specified. Double action auto pistols and revolvers are fitted hammer down. For double-single option pistols, please specify whether they should be fitted with hammer cocked or hammer down. Thumb-snap strap is not available for single action revolvers. Specify hammer type for Smith & Wesson Revolvers. (See Pistol/Holster Availability List.)

#10 Summer Special

Typical inside-the-pants holster design has always been quite simple--a piece of suede leather with a spring clip attached. The problem is that reholstering is very difficult since the holster flattens as soon as the pistol is removed. Springs tend to catch on things and wear out resulting in the holster coming out attached to the gun. Proper firing grip is not possible because the pistol sits too far below belt level.

In 1967, I designed the Summer Special to correct the problems inherent in the typical design. This inside-the-pants holster has a metal lined top band to allow reholstering. It utilizes a strap around the belt that is secured by a one-way "pull the dot" snap. Thin leather, precision hand molded, minimizes bulk inside the pants, and the "rough out" texture allows the leather to adhere to clothes for position stability. This holster is made with a wide strap for certain short-barreled pistols to create additional stability. Available in natural, unfinished leather only, nickel hardware only. Not recommended for large frame .44 and .45 caliber revolvers or revolvers with barrels over 5 inches. (See Pistol/Holster Availability List.)

#15 Centurion - Police Duty Holster

The first priority in development of this design was single unit construction. The current trends in police duty holsters include a type of construction that involves attachment of a belt loop unit to the body of the holster. Though heavy duty rivets and stitching are used, the considerable stresses placed on this type of design in many cases causes a loosening of the two parts, rendering the holster unserviceable. The #15 Centurion incorporates holster and belt loop from the same pieces of leather with extensive lining of galvanized steel between the layers.

Security of the pistol has been engineered by means of three design features. The first is the covered trigger. The second is by means of a formable, leather-covered, thumb-snap strap that is fitted after all other holster fitting is done. This insures that the strap releases crisply for rapid access--a quality often missing in thumb-snap holsters. The third feature is the adjustable tension

device. The method incorporated in the Centurion uses a machine screw that tightens the holster around a selected portion of the pistol. Many of the current tension device designs involve the exposure of large visible buttons or knobs, which by virtue of their position can catch on seatbelts, doorways, etc. The tension adjustment on the Centurion is located on the back of the holster and is not visible when the holster is worn.

The ideal holster/belt attachment should be one that locks the two together as one unit to avoid the shifting and movement common to duty holsters. The Centurion belt loop is tightened around the Sam Browne Belt by machine screws creating single unit solidity. The Centurion positions the top of most pistols at belt level and is set for straight drop angle. This incorporates significant draw speed and assures that officers of varied sizes can use the holster.

Available in 2-1/4" belt loop only. Available for Colt .45 Government Model or Commander, Python 4", Smith & Wesson K and L Frames 4", and Models 39, 59, 439, 459, 639, 659 and 645, Browning P-35 Hi-Power, HK P7M8, P7M13 and P9S, and Sig Sauer P-220, 225 and 226. (Specify hammer type for Smith & Wesson Revolvers.)

#20 Pistoleer - Competition Holster

The 15 degree barrel forward angle of this competition holster places it at an ideal angle for gun/hand contact under optimum speed conditions. This also represents the best angle for strong-side as well as cross-draw use in a competition holster. Perhaps one of the most important features of a correctly designed competition holsters is that it eliminates the movement of the gun within the holster which can be seen in holsters that attempt to fit many different pistols or are lacking in precise fit. The advantage of the pistol being held in exactly the same position for each draw is obvious when speed requirements are considered. Extensive metal lining includes metal in the belt loop to create additional stability. The securing of the belt loop around your belt by machine screws eliminates all holster/belt movement. The tension adjustment is precise and hidden from view, which eliminates interfering knurled knobs or brass buttons and enhances holster appearance. Available in 1-3/4" or 2" belt loop only. Available for Colt .45 Government Model or Commander, Bren 10, and Browning Hi-Power. Can be made for most compensated custom .45 autos. (Please send photo and dimensions for price quote.)

#35 Kodiak - Hunting Holster

Maximum versatility is the goal of this design, which can be worn in shoulder position both over or under a coat, and on a belt up to 2 inches wide in both strong side and cross-draw positions. The holster is completely leather-lined and is provided with a compact flap to protect the sights and hammer. The shoulder harness is foam padded in the shoulder area. It is adjustable to balance weight between belt and shoulder. The holster can be quickly and easily changed from one carry position to the next as weather and terrain dictate. Long barreled pistols are easily worn using this holster.

Available for Smith & Wesson L and N Frames (specify hammer type), Ruger Redhawk, Super Blackhawk and Blackhawk, Colt Python, Single Action Army and New Frontier. Not available for scoped guns.

#150 Arizona Territory - Western Gunbelt

This rig is the classic Western gunbelt. Each order is custom made and many variations on this general design are possible including higher holster location, belt style, number of cartridge loops and choice of finish. The pictured gunbelt is made for Colt Single Action Army 4-3/4" barrel with billeted style belt, and contrasting rough-out and full grain leather. The holster is

constructed with a metal lining in the belt loop and around the pistol which allows cylinder rotation for competition events. Holster angle is 20 degrees barrel forward. Retention is by means of a hammer thong. Leather strap with buckle is included for tie down.

Available for Colt Single Action Army and New Frontier, Ruger Super Blackhawk and Blackhawk, Smith & Wesson K, L and N frames, and Colt Government Model, Commander and Python.

#155 Javelina - Hunting Rig

There has always been a problem with finding a practical way to carry hunting revolvers with long barrels. This design takes a lesson from the police swivel holster and expands it into a hunting system. Regardless of the barrel length, this rig allows comfortable sitting in your jeep or other vehicle as the holster swivels alongside your leg. Walking through brush is aided by the swivel since the rig swivels back as it slides though, and the standard "rough out" leather is not scarred the same way a standard finish would be.

This is a one piece outfit with the holster attached directly to the belt. The belt has metal lining in the hip area and the holster is metal lined in the belt loop and around the cylinder area of the pistol. Twelve cartridge loops are placed above the swivel area which would otherwise be wasted space. The remainder of the belt has brass grommets spaced for military hook equipment. They can also be used to lash any other equipment to the belt that you wish to carry. A unique feature of this rig is the removable flap which provides complete coverage. A standard safety strap is included and replaces the flap when desired.

Since these rigs are custom built, some variations in style and features can be made. Please contact me for information. Available for Smith & Wesson L and N Frames (specify hammer type), Colt Python, Single Action Army and New Frontier, Ruger Super Blackhawk, Blackhawk and Redhawk. Not available for scoped guns.

#25 Briefcase/Purse Holster

There has always been a need for a holster for efficient briefcase and purse carry. The holster is mounted on flat, lined leather. It incorporates velcro, snaps and grommets so that it can be attached to nearly any surface. This design has the advantage over other purse/holster units in that it can be moved to different purses, briefcases or other locations including fixed positions such as under counters, on night stands, on car doors, etc. It is best to purchase this unit first when possible, then shop for purses or briefcases since the size of this unit depends on the pistol size. Available for Colt Government Model, Commander, Officers Model, Detective Special, Cobra and Agent 2", Government Model and Mustang .380, Smith & Wesson J and K frames 2" to 3", Star P.D., Walther PPK and PPKS, AMT/OMC .380 Backup, Browning BDA .380, Beretta 84 .380, Heckler & Koch P7M8, P7M13, P9S, Browning and Inglis P-35 Hi Power, Glock 17.

#30 Ankle Holster

In an attempt to find components to make a comfortable ankle holster, many materials were examined. Of the typical choices, wool fleece tends to absorb moisture while thick felt has limited compressibility. A special type of foam padding covered by orthopedic suede was selected because it provides a moisture resistant and comfortable combination that makes long hours of wearing possible. The precision hand molded holster also has a pull-through snap retainer. A 2 inch wide velcro closure allows snug movement-free wearing. Available for Smith & Wesson K and J frame 2", Walther PPK, PPKs, AMT/OMC .380 Backup, Colt Government Model and Mustang .380, Charter Arms Undercover, Off Duty 2", Bulldog 2-1/2". Basket stamp not available.

Ammunition Carriers

#50 Single Magazine Pouch

The early designs in magazine pouches did not take into account the potential for speed reloading the semi-auto pistol. Still today, some manufacturers do not understand the role that pouch design plays in the reload. As a rule of thumb, the top 1-1/2" of the magazine should be exposed so that the magazine is grasped by the non-gun hand properly for the technique of reloading. Cartridges in the magazine to be speed loaded should have the bullets forward (in the direction of the belt buckle.) The #50 Single Magazine Pouch conforms to these design principles. Available for magazines of pistols in the Pistol/Holster Availability List. Add \$2.00 for HK P7M8 pouch due to design of magazine requiring fabrication of a channel inside the pouch. Specify right or left handed and belt loop size up to 1-3/4".

#55 Double Magazine Pouch

A common design choice incorporated in many double magazine pouches is to set both magazines facing forward. The theory behind this choice is that two speed loads are possible. Unfortunately, room for the index finger exists only for the front magazine. The price of attempting to provide the rarely needed second speed load is a significant increase in the size of the pouch.

The #55 Double Magazine Pouch is designed for magazines set facing opposite directions. Because the magazines face in opposite directions, the pouch is very compact. The rear magazine should be considered the spare, to be moved forward when necessary. If two speed loads are needed, they can be accomplished from two single pouches or the front of two double pouches. Available for magazines of pistols on the Pistol/Holster Availability List except .380 Autos. Add \$3.00 for HK P7M8 pouch due to design of magazines requiring fabrication of channels inside the pouch. Specify belt loop size for belts up to 2-1/4".

#60 Summer Special Single Magazine Pouch

The design of this inside-the-pants magazine pouch is intended for use when maximum concealment is needed. Design principles are the same as those of the Summer Special Holster. Available for magazines of pistols on the Pistol/Holster Availability List. Add \$2.00 for HK P7M8 pouch due to design of magazines requiring fabrication of a channel inside the pouch. Specify right or left handed and belt loop size up to 1-3/4".

#65 Shotgun Partner - Shotgun Shell Holder

Carrying of spare ammunition on the shotgun stock has proven to be a good system. A good design should avoid the rounds being placed far enough forward to interfere with the wrist of the hand gripping the pistol grip. A second design issue has to do with adding material to the top of the stock by wrapping it with a snap-on or lace-on shell carrier made from thick leather. One of the most difficult things to accomplish in training people to shoot a shotgun is to get their head and eye positioned low enough on the stock. Since the eye functions as the rear sight on shotguns without sights, thick material raises the eye causing a tendency to shoot high.

The #65 Shotgun Partner holds five rounds and attaches to the stock with four small brass wood screws, avoiding the need for leather on the comb of the stock.. This provides a small carrier that will not shift or come off during use. Available for 12 gauge only.

#66 Fifteen Round Shotgun Shell Holder

The most important thing missing from the array of fabric and elastic shell belts and bandoliers on the market is solid consistent positioning for certainty and speed of reload. This heavy duty leather 15 round shell holder snaps around your gunbelt in four places. The securing straps are spaced so that the shell holder straddles the belt buckle allowing the holder to be worn in front while wearing your holster and magazine pouch. The holder can also be worn in back if you prefer. This unit has become very popular for shooting school courses where simulators and reaction ranges require keeping the shotgun loaded. It is also popular for bird hunting. Available for 12 gauge only.

#67 Fast Five - Shotgun Shell Holder

This heavy duty leather five-round shell holder provides stable positioning for quick reloading. It snaps over your gunbelt and the straps are spaced to even allow straddling of most belt buckles if other belt space is occupied. Available for 12 gauge only.

#68 Quick Two - Shotgun Shell Holder

This two round shell holder provides that extra two rounds for the double barrel shotgun, for police concealment needs and to isolate two specialized rounds on your belt or sling. It is suede lined and snaps around belts up to 1-3/4" using a pull-the-dot one-way snap. For 12 gauge only.

#75 Rifle Single Magazine Pouch for AR-15/M-16/Mini 14

#76 Rifle Single Magazine Pouch for Beretta BM-59/62, M1A/M14, FN-FAL, HK 91

The advent of combination rifle and pistol competition has necessitated rifle magazine pouches that combine with your gunbelt and holster. Until recently the slow, full flap military gear has been the only choice. The #75 and #76 are open top for fast access. The belt loop is secured at the bottom by two pull-the-dot one-way snaps for easy placement on your belt. These Rifle Single Magazine Pouches are primarily designed for 20 round magazines.

#85 Six Loop Pistol Cartridge Carrier

This cartridge carrier features stitched looping, suede lining and extra compact design. It places the cartridge loops close to the top of the carrier facilitating quick access. It snaps over belts up to 1-3/4" wide using two snaps. Available in .38/.357, .44 or .45 caliber only. Please specify caliber.

#90 Single Speed Loader Pouch

This pouch holds the speed loader so that three rounds ride on each side of the belt. A unique release sytem makes the pouch more compact by placing the release on top allowing easy opening with the index finger while holding the loader with the thumb and middle finger. Available for 1-3/4" belt only, Safariland Comp I and Comp II and Second Six loaders only, Smith & Wesson K and L frames only.

Belts

The importance of the belt in your carry system cannot be underestimated. Most belts are designed to support only the weight of your pants. The gunbelt should be made out of tough dense leather and should be lined with leather. The total thickness should be approximately 1/4". My belts are reduced in thickness slightly in the buckle area to make buckling and use of different buckles easier. The gunbelts in this section are designed to comfortably carry the weight of your pistol and equipment.

Have you ever noticed the "kink" that develops in the rear of your belts? This is because your belt was cut in a straight line and is trying to conform to your body. The distance around your waist at the top of your belt is usually slightly less than your waist size at the bottom of your belt. This accounts for the bend or kink. The kink is also caused by the pants belt loops in the rear pulling down on your belt when you sit down. The solution is the contour curved belt. It took years for any designer other than myself to adopt this method for pants belts although it had been done for Western rigs for years. Once you've worn a contour curved belt, you will find the straight cut belt noticeably less comfortable especially when the weight of your pistol and magazines have been added.

In choosing which belt model is best for you, start by measuring the width of your pants belt loops. A second consideration is the weight of your pistol and equipment. A wider belt will give the heavier equipment more support. My belts are equipped with solid brass buckles. Nickel is available if requested. The Model #115 Belt tapers from 1-3/4" to 1-1/2" in the buckle area for a slimmer look. This tapering also allows the use of the more common 1-1/2" buckle should you later change to another buckle. The Models #110 and #115 are available with "football and diamond" decorative stitch for \$5.00 additional (available on lined belts only). For single weight (unlined) belts, deduct \$10.00 from the price specified. For a proper fit, please carefully follow belt measuring directions in the Ordering Instructions.

#100 1" Belt

This is a frequent choice for women as well as men whose pants have the narrow belt loops. It will support light to medium weight pistols comfortably.

#105 1-1/4" Belt

A very good, unobtrusive dress/gunbelt for suit and sport coat wear that will comfortably support all pistols routinely carried concealed.

#110 1-1/2" Belt

This is a good choice when worn with suits and sport coats where pants loops will accommodate it, and is a good choice for heavier pistols. It is a nice belt for Levis and other denim pants. This belt is a preferred choice over model #115 if your waist is 28 inches or less.

#115 1-3/4" Belt

This is my most popular belt for those who are taking instruction at shooting schools. It is the perfect belt for your blue jeans and supports the weight of any pistol normally carried on the belt.

#130 Sam Browne Belt

This is a very heavy duty leather lined belt. Police officers who have this belt have become real converts to the value of the contour curved belt since 10 to 15 pounds of equipment is sometimes carried. You will really feel the difference at the end of the shift.

Accessories

#205 Handcuff Case

This case is a light, compact design for under the coat use in non-uniform assignments. Its design look and finish matches my holsters, ammunition carriers and belts. For Smith & Wesson and Peerless cuffs.

#210 Sam Browne Belt Keepers

These keepers are the wide double snap type with slots to feed your pants belt through if you wish. They are precisely fitted to the Sam Browne Belt. There is no extra charge for basket stamp.

#215 Knife Sheath for Al Mar SERE Folding Knife

This sheath is compact and precision-molded for wear on pants belt and under the coat. It is a much needed alternative to the large box type sheath that comes with the knife. State right or left hand, micarta or rubber handle, and belt loop size up to 1-3/4".

#225 C.W. Sling

Carlos Widmann rediscovered a forgotten British rifle sling arrangement that is fast and solid. Jeff Cooper has brought this method to our attention and taught its use. This is a significant practical rifle development, which requires a sling swivel ahead of the trigger guard. It can also be used as a standard carry sling. This is the only C.W. Sling available with a special foam padding covered by orthopedic suede leather that helps to anchor the arm in position and dampen heartbeat-induced movement.. The sling is 2" wide in the padded area. For 1" sling swivels only.

#230 Woman's Holster Adapter

In my many years of teaching practical shooting, I have observed that the leather gear designed for men does not always work for women. The chief holster problem is that concealable, practical holsters worn strongside tend to lean into the ribs of the female wearer because of a significant differential between waist and hip measurement. With the pistol resting angled into the ribs, drawing becomes very difficult. The woman's Holster Adapter is a foam padded spacer that rests between pants and blouse. This stands the pistol back in a more vertical position allowing the draw to work more smoothly. A good alternative to using this adapter is to wear the #1 Professional Holster cross-draw. The adapter is often not needed in this position. Duty and competition holsters do not require the adapter since their design positions the pistol away from the body.

Ordering Information

Leather Color Selection

Without a doubt my Natural Medium Tan finish is my most attractive leather color and accounts for about 90% of my orders. This finish is achieved by using methods which, to the best of my knowledge, are not used by any other maker. Dark Brown is a rich dyed finish that is a very deep shade of brown. Black is also a dyed finish that uses a special method to achieve a cool rich black tone.

Telephone Calls

Should you have any questions after reading this catalog, I will be happy to hear from you. The best time to reach me is from 9:00a.m. to 5:00p.m. Mountain Standard Time, Monday through Friday. Please let the phone ring a few extra times as I am sometimes doing work that delays picking up the phone immediately. There will also be times when the need for equipment or materials will take me away from the shop during these hours. Please try again if this happens.

Delivery Time

Quality is my first priority. I work hard to make each holster the very best I know how to build. This can only be done through time-consuming hand work. I handle orders in the order received so that no one must wait while someone else gets preferential treatment. Delivery time when this catalog was mailed to you was approximately 6 to 12 weeks.

Custom Work

I will do a limited amount of custom work on sound ideas with a full detailed description and/or sketches from the client. Custom work is often expensive. I will quote a design fee and product fee separately and then you can decide if you would like to go ahead. All rights to the designs for custom work remain the property of Bruce Nelson Combat Leather.

Holsters and Carry Systems for Elite Units and Special Operations

I do special design work for law enforcement covert/undercover special operations units and elite military teams. If you have special requirements, your special weapons, suppressors, and radio equipment can be provided for with complete confidentiality.

Action Arms Distributorship

I am a Law Enforcement Distributor for Action Arms Ltd. and welcome inquiries from Law Enforcement Agencies and Class III Federal Firearms Licensees who are interested in purchase of UZI and Galil Firearms, the Mark V Action Sight and Samson Ammunition as well as other Action Arms products.

Changes in Design

I am constantly designing new equipment and refining current models. This means that the model you receive could vary slightly from those pictured in this catalog. Changes are made only after extensive testing proves that the change improves the function of the design.

Firearms Training

While having a pad of paper and a pencil does not make you a writer, some people feel that a \$1,000 custom pistol will turn you into a champion. Some of the best advice I can give you is to invest at least as much in learning to shoot safely and skillfully as you do in your equipment. The following shooting schools will provide you with quality training. The inclusion of the schools listed below does not mean to imply that there are not other good schools. However, I list these schools because I know their directors and am familiar with their programs.

American Pistol Institute
Jeff Cooper, Director
P.O. Box 401
Paulden, Arizona 86334
(602) 636-4565

API, or "Gunsite", as it is commonly known, is the world's best known shooting school and is highly regarded by its thousands of graduates from all over the world. Its Director, Jeff Cooper, is the father of the Modern Technique of the Pistol and has made an unequalled contribution to the development of weaponcraft. API's classes are taught throughout the world and at its facility which has an extensive array of ranges and simulators. Pistol, rifle and shotgun instruction is available at beginning through advanced levels. Brochure \$2.00.

American Small Arms Academy
Chuck Taylor, Director
1713 Far View Lane
Prescott, Arizona 86301
(602) 778-5623

ASAA is directed by well known gun writer and firearms instructor Chuck Taylor. Taylor provides solid, knowledgeable training at locations throughout the world. His two-day Seminar Programs are especially valuable for those who cannot travel away from home or take time off from work. In addition, he offers courses lasting three or four days. Pistol, rifle and special weapons (sub-machine gun/shotgun) instruction is offered for beginning through advanced students. Brochure \$3.00.

The Chapman Academy
Ray Chapman, Director
Route 1 Box 27A
Hallsville, Missouri 65255
(314) 696-5544

Ray Chapman, former World Practical Pistol Champion, is a master at competitive shooting technique. He offers a multi-level program in pistol, pistol/shotgun, and police survival. His programs are offered both at his facility and at locations around the world by special arrangement. Brochure: No Charge.

Heckler & Koch Inc.
Clint Smith, Director of Training
14601 Lee Road
Chantilly, Virginia 22021
1 (800) 368-3658

Heckler & Koch's training under Clint Smith offers pistol, rifle, shotgun and automatic weapons training for law enforcement, military and civilian/sportsmen. Courses are taught throughout the United States at all skill levels. Brochure: No Charge.

Practical Firearms Training
Ken Hackathorn, Instructor
17 Putnam Place
Marietta, Ohio 45750
(614) 373-7226

Ken Hackathorn is a noted gun writer, practical shooting competitor and teacher. He provides expert instruction in pistol, rifle, shotgun and full auto weapons to military, law enforcement and civilian groups on a contract basis throughout the United States. Brochure: No Charge.

Important Notice

Because I cannot control how my holsters and other equipment are used after purchase, all products are sold "AS IS" and "WITH ALL FAULTS".

The implied warranties of merchantability and fitness for a particular purpose and all other warranties, express or implied, and any liability for incidental or consequential damages resulting from the use of any Bruce Nelson Combat Leather product are disclaimed and excluded from this transaction and shall not apply to the product purchased. Upon purchase of the product, the buyer and/or user assumes all risks as to the quality and performance of the product. In the event that the product is defective, the buyer and not the maker assumes the entire risk and expense of any required repair or servicing. If the product is purchased for a specific use, the buyer and not the maker is solely responsible for the determination of the fitness or suitability of the product for such use.

Some states do not allow the exclusion or limitation of implied warranties or liability for incidental or consequential damages, so the above limitations and exclusions may not apply to you.

It is the policy of Bruce Nelson Combat Leather that all clients be satisfied with their purchases. Should questions or problems arise, feel free to contact me.

National Rifle Association

It is essential that all those who value the freedom the Second Amendment guarantees be members of the National Rifle Association and contribute regularly to the Institute for Legislative Action. Preservation of your rights also demands ongoing communication with your legislators and action to elect those who will uphold ownership and use of firearms for lawful purposes of all kinds. It is also important that you participate in the government of the NRA to insure that it represents you and your best interest.

DVC,

Bruce Nelson

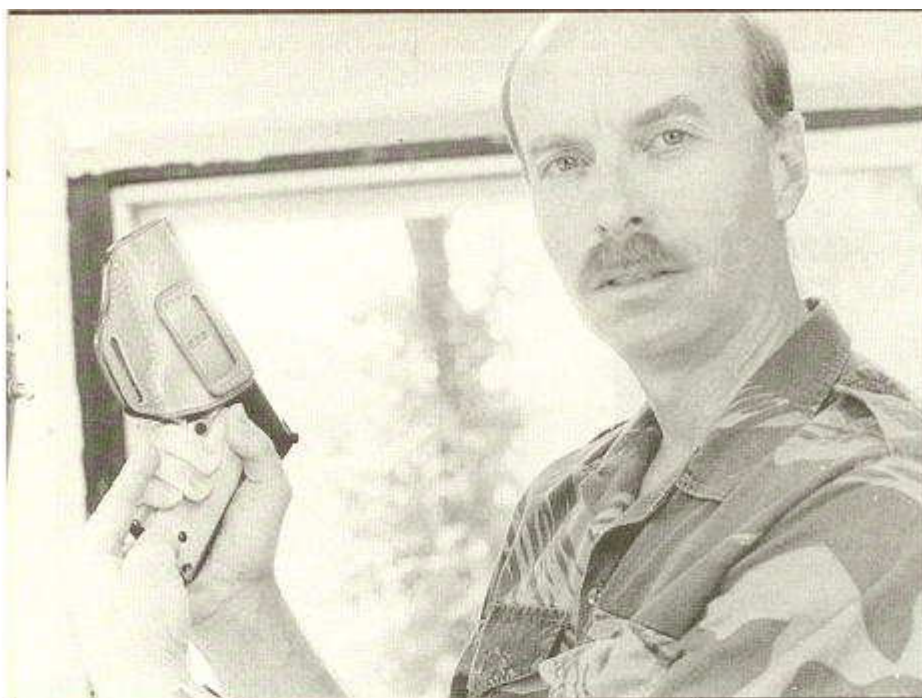
© Copyright 1986 Bruce Nelson, All Rights Reserved

ORDERING INSTRUCTIONS

To order, please specify on order form the following information for each item ordered:

1. Model number and name of item ordered.
2. Make, model, caliber and barrel length of pistol. (NOTE: None of my holsters are made to accomodate trigger shoes. Their use may be dangerous and is not recommended. In addition, most holsters will not work with extended slide stops and other enlarging modifications. There is generally no problem with extended thumb safeties.)
3. Color - Natural Medium Tan, Dark Brown or Black Leather.
4. Options desired - check options on price list and indicate those desired. Note: Basket stamping is not recommended on models #1 through #4 Professional due to precision molding. It is not available on #30 Ankle Holster.
5. Type of hardware - Brass hardware is standard, nickel is available on request.
6. Right or left handed.
7. Holster belt loop size - 1", 1-1/4", 1-1/2" or 1-3/4". Note: 2-1/4" is standard for police duty holsters.
8. How to Measure for Belt Size -- **Do not** send me your size from another belt you have nor your pants size as neither of these measurements are meaningful in determining your proper belt size. Please take an **actual measurement over clothes** at the point you normally wear a belt. Lay the tape measure **loosely** over this point. **Do not pull it tight.** You should wear clothes while measuring that are typical of those worn while carrying or shooting your pistol. This is the only way to insure an accurate fit. I do not add inches to the measurement you provide so please be certain the measurement you give me is correct. Advise if predominately using Summer Special or Woman's Holster Adapter. **Note:** Sam Browne Belts should be measured **over pants belt** as normally worn, laying the tape measure loosely as described above. For hunting rigs such as the #155 Javelina or Western rigs such as the #150 Arizona Territory, loosely measure the area over clothing about 2 inches below pants belt level.
9. The shipping address, if different from the return address on your order.

After providing the above information, total the cost of your order. If you are an Arizona resident, add 5% of the total order amount for Arizona sales tax. Also, please add 6% of the total order amount (before tax) for postage and handling (minimum \$2.50.) For orders outside of the United States, add 15% for postage and handling. Foreign orders are payable in U.S. Funds only. Payment should be by check or money order payable to **Bruce Nelson Combat Leather**. Please do not send cash.

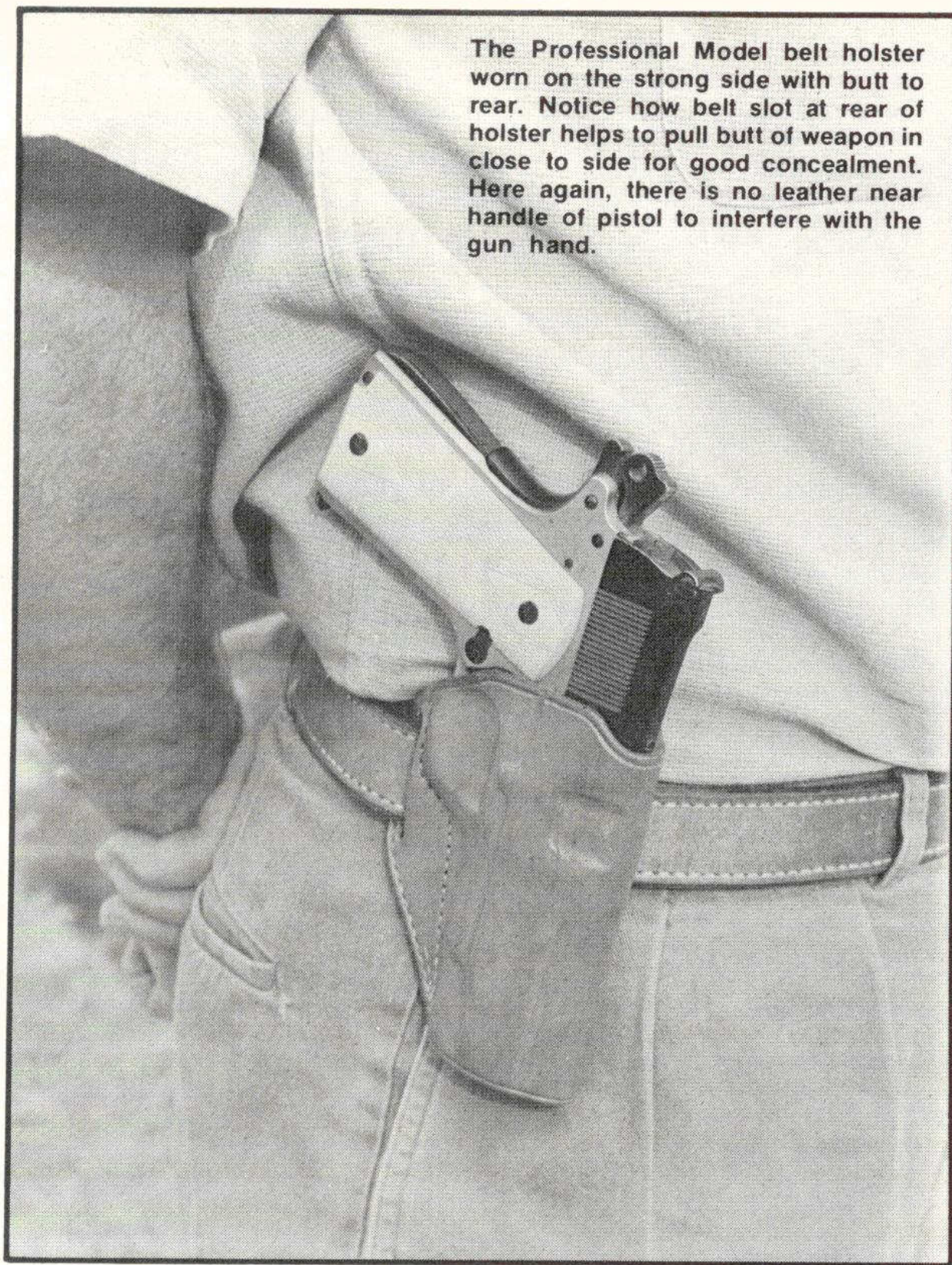


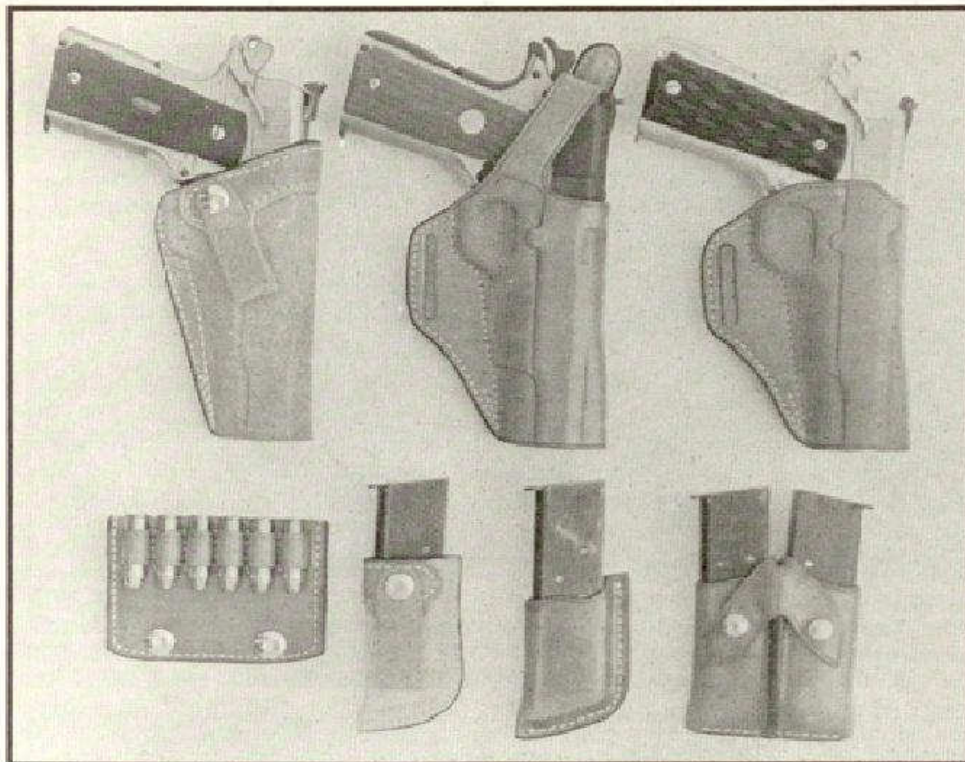
Here Bruce illustrates one critical design feature that many holsters don't properly address, especially those meant for concealment. The gun hand **MUST** have clear access to the butt of the weapon, if smooth, controlled, and consistent draw speed is to be achieved. The base of the triggerguard should have no leather near it that will interfere with positioning the second finger.



The Summer Special carries the pistol inside the waistband and close to the body for good concealment. This is a comfortable and low profile method for carrying a good sized defensive pistol such as the .45 Auto pictured here. Pistol is positioned high on the belt, with no leather near butt of weapon to interfere with solid hand to gun contact.

The Professional Model belt holster worn on the strong side with butt to rear. Notice how belt slot at rear of holster helps to pull butt of weapon in close to side for good concealment. Here again, there is no leather near handle of pistol to interfere with the gun hand.

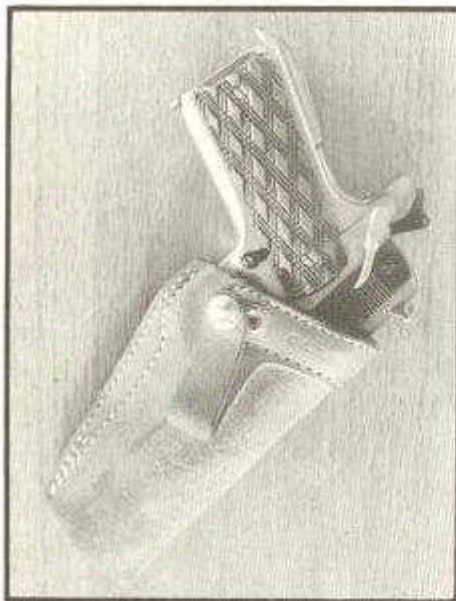




From left: the Summer Special, Professional Model with thumb break retainer, and Professional Model without thumb break. Bottom; snap on six round belt slide, Summer Special mag. pouch, single mag. belt pouch, and double pouch.



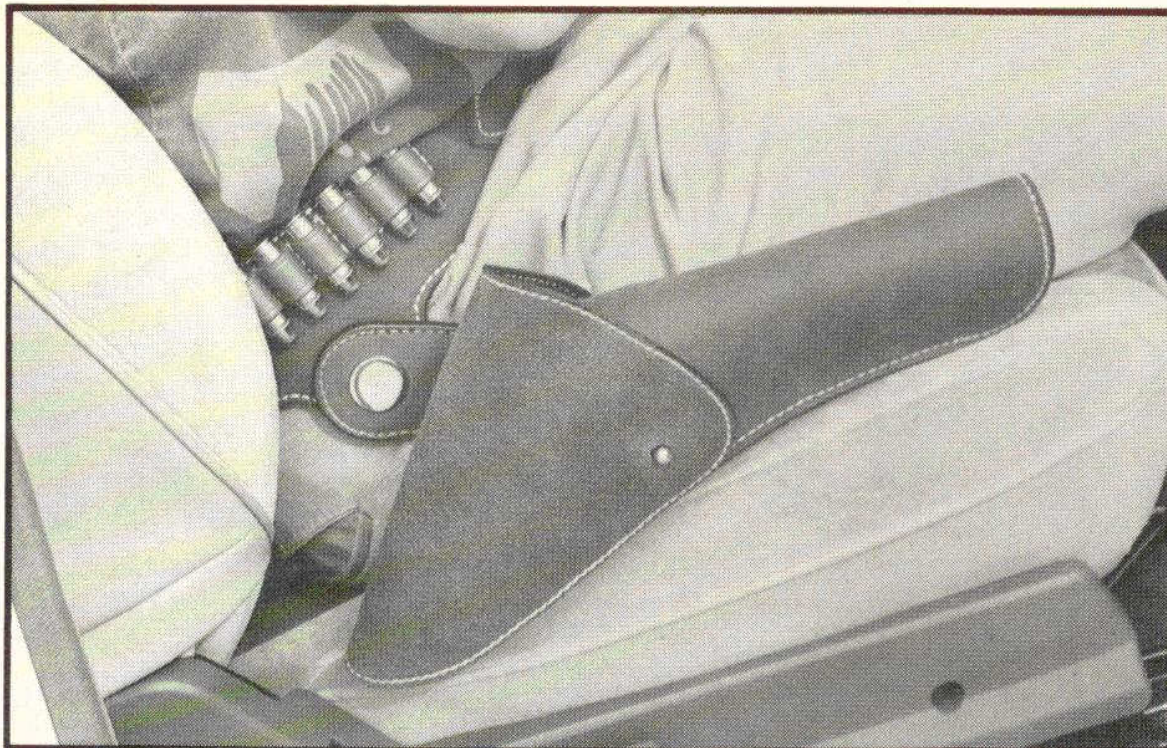
From left; Centurion duty holster for autos, Centurion duty holster for revolvers, and Pistoleer competition model. All three are metal lined, clamp to the belt for firm positioning via machine screws, and have an adjustable screw tension device on the back of the holster. In addition, the Centurion holsters have thumb break retention.



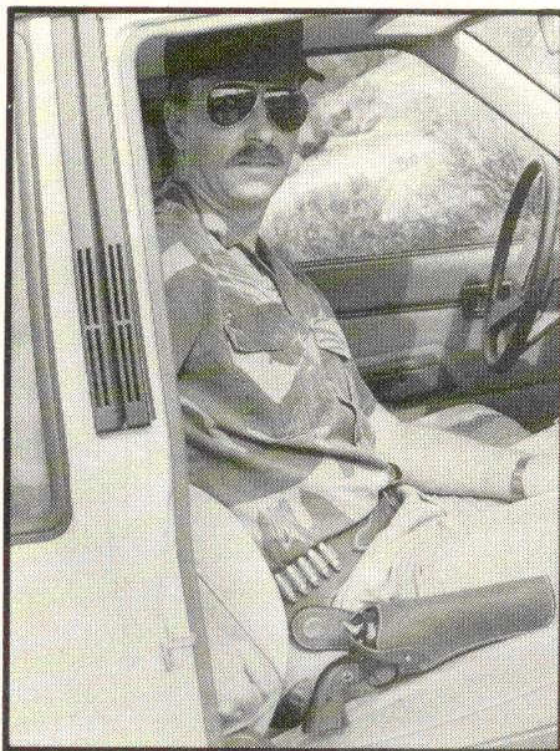
The Summer Special inside the pants holster offers several excellent features. Rough out finish helps anchor pistol against clothing, leather strap and one way snap securely attach holster to belt, covered metal band about mouth of holster prevents binding on the draw and permits reholstering with one hand if necessary. Most inside the pants holsters squash flat after the pistol is drawn. Note absence of leather near base of triggerguard, for good initial grip at start of draw.



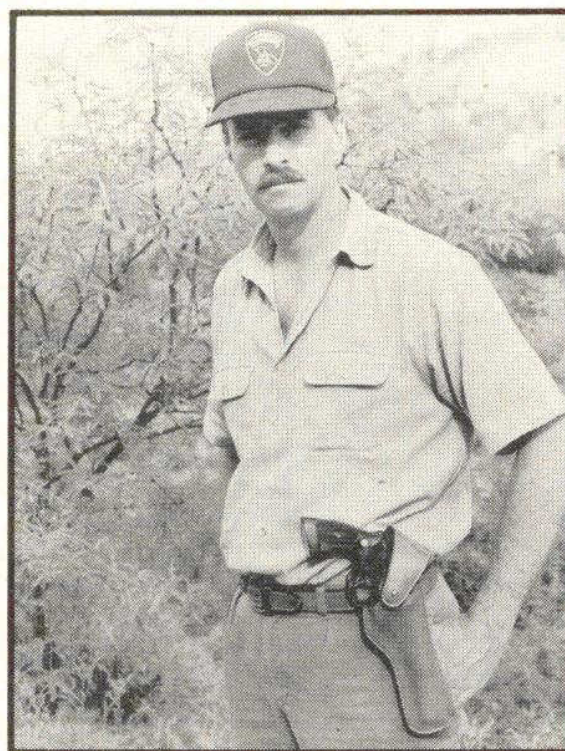
Here we have Bruce Nelson's ankle holster. The covered trigger and pull through snap retainer provide good security without loss of draw speed. Velcro is used to attach holster snugly but comfortably to ankle. Sock would normally be worn over bottom half of holster for added concealment.



This is the Javelina hunting rig. It is mounted to the belt with a large brass swivel for comfort when sitting, and has a detachable full flap to completely protect your expensive hunting handgun when the going gets tough. Rough out finish won't show scars from rocks and brush.



Here we see the Javelina holster with flap removed and conventional safety strap in its place. Twelve cartridge loops are positioned above the swivel, with brass grommets around the rest of the belt for G.I. style hook equipment.



The Kodiak hunting rig offers versatility. Here it is worn in the cross draw position, but it may also be used on the strong side, or as a shoulder holster, as you desire. Note small flap to protect sight, and to provide security.



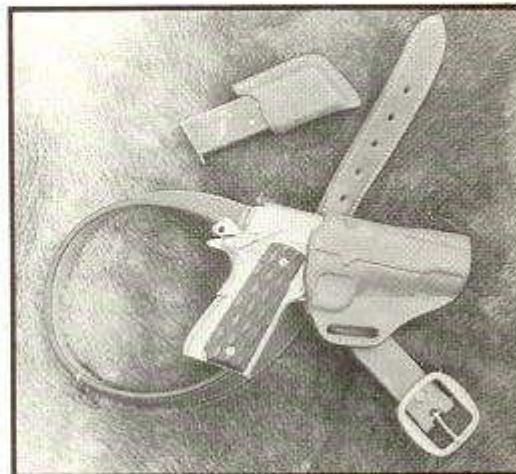
Five round shotshell holder is convenient and comfortable. It fastens to belt via straps and snaps on the back.



Two round snap over the belt shotshell holder is quite compact. One or two of these would be a convenient way for police officer to carry spare shotgun ammo.



Bruce's double magazine pouch is one of the most compact on the market, yet is quite secure and provides ready access to reserve ammunition.



This trio of items shows a good cross section of Nelson leather gear. Professional Model holster, single mag pouch, and lined one and threequarter inch gunbelt that tapers to one and one half inches at buckle. This is an excellent, versatile, and compact combination that is equally at home when worn openly or concealed.

Photographs from February, 1987 Combat Handguns





"Forward-of-hip" seated draw illustrated. Forward of hip is actually more concealable since you can lean forward (as in looking into the trunk of a car, etc.). If pistol were in rear, it would poke out while leaning forward. "Bump-frisk" is also harder to do since you lay your arm comfortably over the gun while standing or sitting.

18 Bruce Nelson - Holster Analysis, Pistolero, June, 1980